

Test Report

Report No.: AGC00552190202-002

Date: Mar.12, 2019

Page: 1 of 7

Applicant: Shenzhen Huafurui Technology Co., Ltd.
 Address: Unit 1401 &1402, 14/F, Jin qi zhigu mansion (No. 4 building of Chong wen Garden), Crossing of the Liu xian street and Tang ling road, Tao yuan street, Nan shan district, Shenzhen,P.R. China
 Test site: 1,6/F.,Building 2,No. 1-4, Chaxi Sanwei Technical Industrial Park, Gushu, Xixiang, Baoan District, Shenzhen, Guangdong, China

Report on the submitted sample(s) said to be:

Sample Name : Smart Phone
 Model : J5
 Brand : CUBOT
 Sample total weight : 155.07g
 Manufacturers : Shenzhen Huafurui Technology Co., Ltd.
 Address : Unit 1401 &1402, 14/F, Jin qi zhigu mansion (No. 4 building of Chong wen Garden), Crossing of the Liu xian street and Tang ling road, Tao yuan street, Nan shan district, Shenzhen,P.R. China
 Sample Receiving Date : Feb.19, 2019
 Testing Period : Feb.19, 2019 to Mar.12, 2019

WEEE Directive Category: (Category 6 Small IT and Telecommunications Equipment)

Result of Reuse /Recycling /Recovery Assessment

Reuse /Recycling /Recovery	Reuse /Recycling (%)	Recovery (%)
Reuse /Recycling /Recovery Targets under the 2012/19/EU WEEE Directive	55	75
Result of Assessment	82.96	82.96
WEEE requirement compliance	OK	OK

Approved by: 

Liulinwen, Lewis

Technical Director



The results shown in this test report refer only to the sample(s) tested unless otherwise stated and the sample(s) are retained for 30 days only. The document is issued by AGC, this document cannot be reproduced except in full with our prior written permission. The more details and the authenticity of the report will be confirmed at <http://www.agc-cert.com>.



Test Report

Report No.: AGC00552190202-002

Date: Mar.12, 2019

Page: 2 of 7

Contents:

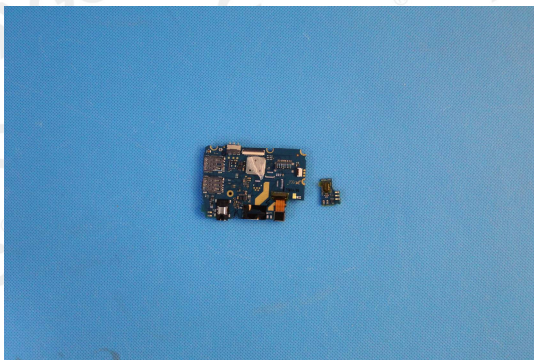
1. Disassembly Tree



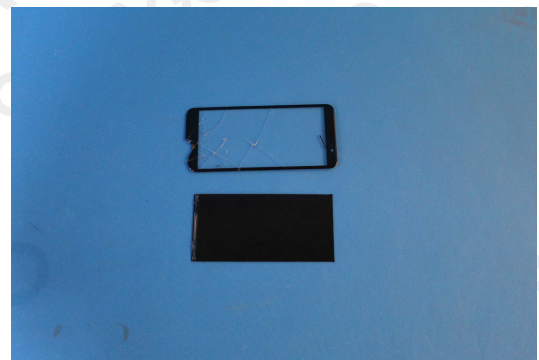
A1



B1



C1



D1

The results shown in this test report refer only to the sample(s) tested unless otherwise stated and the sample(s) are retained for 30 days only. The document is issued by AGC, this document cannot be reproduced except in full with our prior written permission. The more details and the authenticity of the report will be confirmed at <http://www.agc-cert.com>.

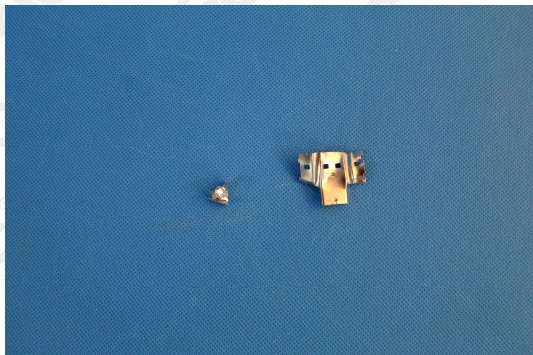


Test Report

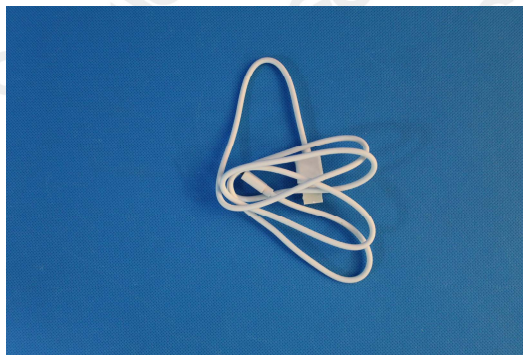
Report No.: AGC00552190202-002

Date: Mar.12, 2019

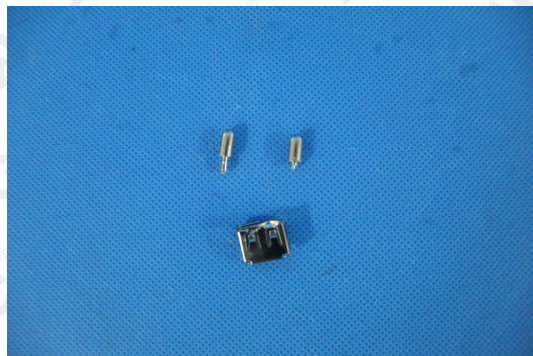
Page: 3 of 7



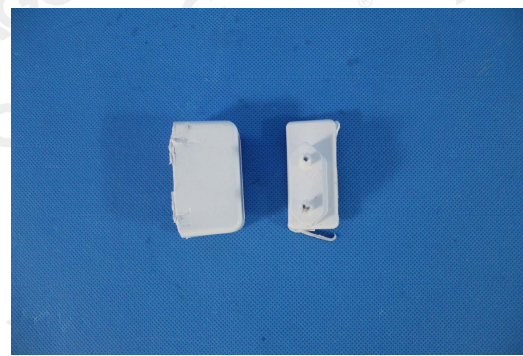
A2



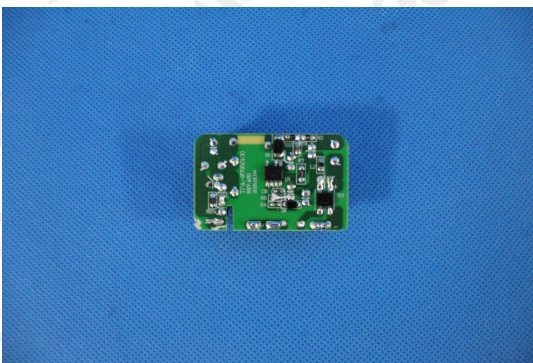
B2



A3



B3



C3

The results shown in this test report refer only to the sample(s) tested unless otherwise stated and the sample(s) are retained for 30 days only. The document is issued by AGC, this document cannot be reproduced except in full with our prior written permission. The more details and the authenticity of the report will be confirmed at <http://www.agc-cert.com>.



Attestation of Global Compliance Std. & Tech.

No.18 C

Tel: +86-755 8358 3833 Fax: +86-755 2531 6612 E-mail: agc01@agc-cert.com 400 089 2118
Add: Building 2, No.171, Meihua Road, Shangmeilin, Futian District, Shenzhen, Guangdong China

Test Report

Report No.: AGC00552190202-002

Date: Mar.12, 2019

Page: 4 of 7

Photo No.	Component/Material Composition	Weight(g)	Reuse/ Recycling (%)	Energy Recovery (%)	Recovery (%)
A1	Metal (Mobile phone)	3.48	100	-	100
B1	Plastic (Mobile phone)	37.59	80	-	80
C1	PCB board (Mobile phone)	8.80	85	-	85
D1	Glass (Mobile phone)	32.93	85	-	85
A2	Metal (Data line)	1.49	100	-	100
B2	Plastic (Data line)	15.51	80	-	80
A3	Metal (Adapter)	2.32	100	-	100
B3	Plastic (Adapter)	15.04	80	-	80
C3	PCB board (Adapter)	11.48	85	-	85
Total		128.64	82.96	-	82.96

2. Disassembly Procedure

The disassembly procedure taken here is in accordance with the treatment requirements under the Annex VII of the WEEE Directive. In addition, to consider economic and efficiency factors, manual operation and disassembly tools have been applied to separate the components and materials from this product in order to simulate the scenario at the treatment facility, and to achieve the objective that the separated components and materials can be reused, recycled and recovered.

The results shown in this test report refer only to the sample(s) tested unless otherwise stated and the sample(s) are retained for 30 days only. The document is issued by AGC, this document cannot be reproduced except in full with our prior written permission. The more details and the authenticity of the report will be confirmed at <http://www.agc-cert.com>.



Test Report



Report No.: AGC00552190202-002

Date: Mar.12, 2019

Page: 5 of 7

3. Disassembly tool

The disassembly tools used for this product show as following:

Disassembly Tool	Pictures	Disassembly Tool	Pictures
Diagonal Pliers		Knife	

4. Selective Treatment for Materials and Components

According to Articles 6(1) and the Annex VII of the WEEE Directive, this product contains components and material items are described in the following table.

Component/Material	Photo No.	Size & Quantity	Weight (g)
Metal	A1+A2+A3	/	7.29
Plastic	B1+B2+B3	/	68.14
PCB board	C1+C3	/	20.28
Glass	D1	/	32.93
The total weight of the sample	/	/	128.64

5. Material and Recycling Information

According to the information declared by the applicant company, the material and recycling information for this product is described in the following table.

The reuse, recycling and recovery assessment for this product is based upon economic and efficiency considerations, and the waste treatment technologies and equipment that are most frequently available to the market.

Photo No.	Component/Material Composition	Weight (g)	Percent Weight (%)	Reuse/Recycling (%)	Energy Recovery (%)	Recovery (%)
A1+A2+A3	Metal	7.29	5.67	4.70	-	4.70
B1+B2+B3	Plastic	68.14	52.97	43.94	-	43.94
C1+C3	PCB board	20.28	15.76	13.08	-	13.08
D1	Glass	32.93	25.60	212.24	-	212.24
Total		128.64	100	82.96	-	82.96

The results shown in this test report refer only to the sample(s) tested unless otherwise stated and the sample(s) are retained for 30 days only. The document is issued by AGC, this document cannot be reproduced except in full with our prior written permission. The more details and the authenticity of the report will be confirmed at <http://www.agc-cert.com>.

Test Report

Report No.: AGC00552190202-002

Date: Mar.12, 2019

Page: 6 of 7

Note: Due to their insignificant weight and the difficulty of their separation in a manual operation, sticker, solder, paint and printing materials are not included in this assessment.

Plastic containing brominated flame retardants is not assessed in the list.

6. Recycling and Recovery Rate Calculation

Reuse Recycling & Recovery Rate using in the report are calculated as following formulas :

Reuse & Recycling Rate = Reuse & Recycling Weight / Product Total Weight (%)

Recovery Rate = Reuse & Recycling Weight + Energy Recovery Weight / Product Total Weight (%)

Total weight of the product is including the main product and accessories.

7. ANNEX VII of WEEE Directive

Selective treatment for materials and components of waste electrical and electronic equipment:

- Polychlorinated biphenyls (PCB) containing capacitors in accordance with Council Directive 96/59/EC of 16 September 1996 on the disposal of polychlorinated biphenyls and polychlorinated terphenyls (PCB/PCT) (1),
- Mercury containing components, such as switches or backlighting lamps,
- Batteries,
- Printed circuit boards of mobile phones generally, and of other devices if the surface of the printed circuit board is greater than 10 square centimetres,
- Toner cartridges, liquid and pasty, as well as colour toner,
- Plastic containing brominated flame retardants,
- Asbestos waste and components which contain asbestos,
- Cathode ray tubes,
- Chlorofluorocarbons (CFC), hydrochlorofluorocarbons (HCFC) or hydrofluorocarbons (HFC), hydrocarbons (HC),
- Gas discharge lamps,
- Liquid crystal displays (together with their casing where appropriate) of a surface greater than 100 square centimeters and all those back-lighted with gas discharge lamps,
- External electric cables,
- Components containing refractory ceramic fibres as described in Commission Directive 97/69/EC of 5 December 1997 adapting to technical progress Council Directive 67/548/EEC relating to the classification, packaging and labeling of dangerous substances ,
- Components containing radioactive substances with the exception of components that are below the exemption thresholds set in Article 3 of and Annex I to Council Directive 96/29/Euratom of 13 May 1996 laying down basic safety standards for the protection of the health of workers and the general public against the dangers arising from ionising radiation ,
- Electrolyte capacitors containing substances of concern (height > 25 mm, diameter > 25 mm or proportionately similar volume)

8. Recommendations for WEEE Directive Compliance

- In order to avoid the product not meeting the reuse/recycling/recovery targets regulated under the WEEE Directive and the regulations of EU countries, the applicant company should, when selecting material and

The results shown in this test report refer only to the sample(s) tested unless otherwise stated and the sample(s) are retained for 30 days only. The document is issued by AGC, this document cannot be reproduced except in full with our prior written permission. The more details and the authenticity of the report will be confirmed at <http://www.agc-cert.com>.



Test Report

Report No.: AGC00552190202-002

Date: Mar.12, 2019

Page: 7 of 7

components design, consider they can be easy to reuse and recycle. This consideration will lessen the impact of the required international environmental directives and also improve the product's competitiveness.

- It is recommended that the applicant company, when designing new product, especially where components and materials have a large weight ratio, should consider using recyclable materials in order to increase the product's reuse/recycling/recover ratio.
- The product should apply to the RoHS Directive (Directive 2011/65/EU on the restriction of the use of certain hazardous substances in electrical and electronics equipment). The hazardous substance specification in the Directive should be controlled in the homogenous material of this product.
- If a product has changed its product design, or materials or components employed, then the product should be reassessed and retested in accordance with the WEEE Directive for reuse/recycling/recovery assessment and RoHS for restricted/banned substances requirements.

The photo of the sample



AGC00552190202-002

AGC authenticate the photo on original report only

*** End of Report***

The results shown in this test report refer only to the sample(s) tested unless otherwise stated and the sample(s) are retained for 30 days only. The document is issued by AGC, this document cannot be reproduced except in full with our prior written permission. The more details and the authenticity of the report will be confirmed at <http://www.agc-cert.com>.